

# PLAID<sup>®</sup>

People Living with And Inspired by Diabetes

An Open Access Gateway to Advance Our Knowledge of Diabetes

[www.ThePlaidJournal.com](http://www.ThePlaidJournal.com)

Martin Wood, MSLIS, AHIP

Roxann Mouratidis, MSLIS, AHIP



FLORIDA STATE UNIVERSITY  
COLLEGE OF MEDICINE

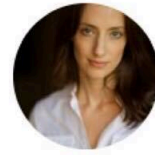
Charlotte Edwards Maguire  
Medical Library

# Average 2019 Price for Scientific Disciplines

Source: Library Journal Periodical Price Survey 2019

DISCIPLINE	AVG PRICE PER TITLE	DISCIPLINE	AVG PRICE PER TITLE
Chemistry	\$5,950	Zoology	\$2,624
Physics	5,089	Botany	2,615
Engineering	3,994	Geography	2,277
Biology	3,769	Math & Computer Science	2,176
Food Science	3,219	Health Sciences	2,156
Technology	2,961	Agriculture	2,072
Geology	2,905	General Science	2,038
Astronomy	2,638		

# The Case for Open Access



**Claire Lehmann** ✓  
@clairlemon


Academic journals:

- don't fund research
- don't pay authors
- don't pay peer reviewers
- charge libraries & the public for access to research that is publicly funded
- issue copyright violations to researchers

Why do we put up with this?

3:03 PM · 2019-10-27 · [Twitter for iPhone](#)





**“Academic research libraries across the nation are experiencing tremendous budget challenges including the need to make substantial reductions to their materials budgets.”**

Elizabeth A. Titus,  
Dean of New Mexico State University Library

Source: Titus, EA. Announcement: 2011 Library Materials Budget Reductions. NMSU Library Cancellation Projects. 2010 Feb 8. Available from:  
<https://nmsu.libguides.com/c.php?g=206139&p=3306330>

**“Make no mistake: The prices of scientific journals now are so high that not a single university in the U.S. — not the University of California, not Harvard, no institution — can afford to subscribe to them all.”**

Jeffrey MacKie-Mason,  
University Librarian and Economics Professor at UC Berkeley

Source: UC Office of the President. UC terminates subscriptions with world's largest scientific publisher in push for open access to publicly funded research. 2019 Feb 28.

Available from: <https://www.universityofcalifornia.edu/press-room/uc-terminates-subscriptions-worlds-largest-scientific-publisher-push-open-access-publicly>

**“Without question, the libraries and access to journals are one of the most important things at this University. At the same time, our budget cut is because we no longer have resources for all of the things that are important, and until we get our budget in order and healthy, we’ll be making some tough decisions....”**

Carl Lejuez,  
University of Kansas Provost

Source: Asbury N. KU Libraries negotiate deal with scholarly journal publishers to migrate cuts. The University Daily Kansan. 2019 Feb 28. Available from:  
[http://www.kansan.com/news/ku-libraries-negotiate-deal-with-scholarly-journal-publishers-to-mitigate/article\\_8962b228-3ad2-11e9-b6f4-c7bfe0a82cf0.html](http://www.kansan.com/news/ku-libraries-negotiate-deal-with-scholarly-journal-publishers-to-mitigate/article_8962b228-3ad2-11e9-b6f4-c7bfe0a82cf0.html)



# Being a Patient



For patients, personal finances can be extremely limited, and are already allocated to necessities.

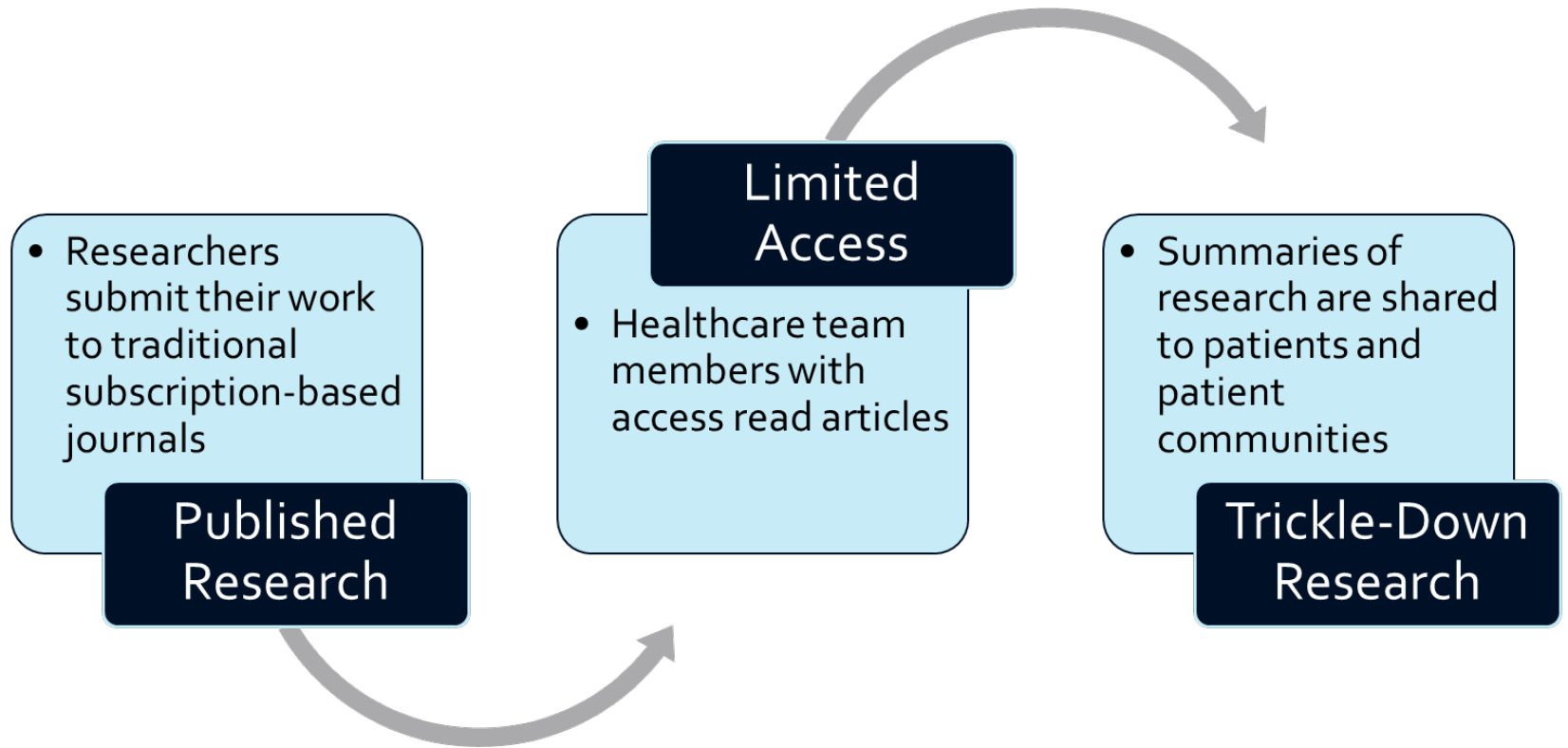


University and college libraries do not provide access to their institutional collections to non-affiliated entities.



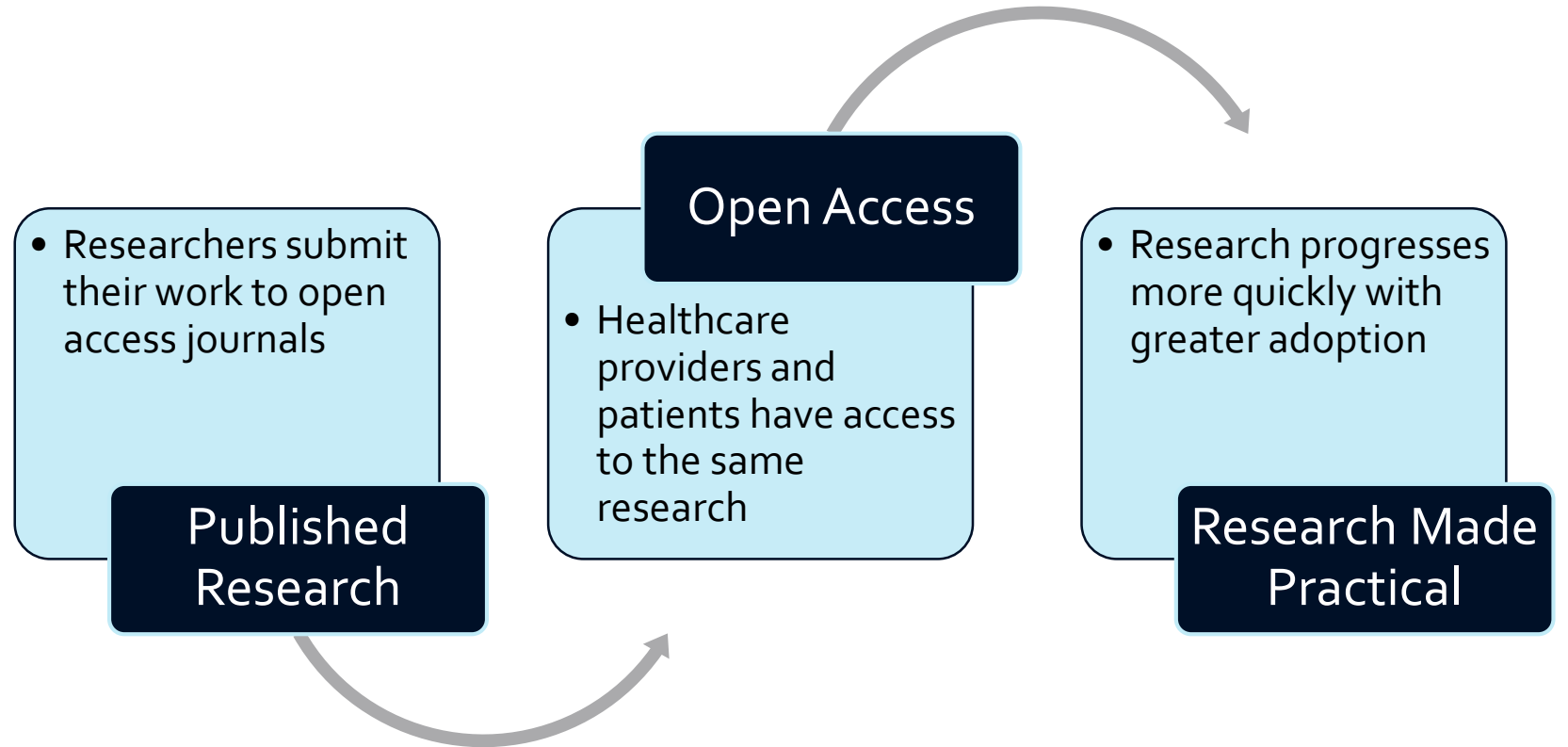
Patients typically learn of medical and scientific advances through their healthcare providers, social channels, and word of mouth.

Dissemination of Information from Researchers to Patients via a Traditional Publishing Model



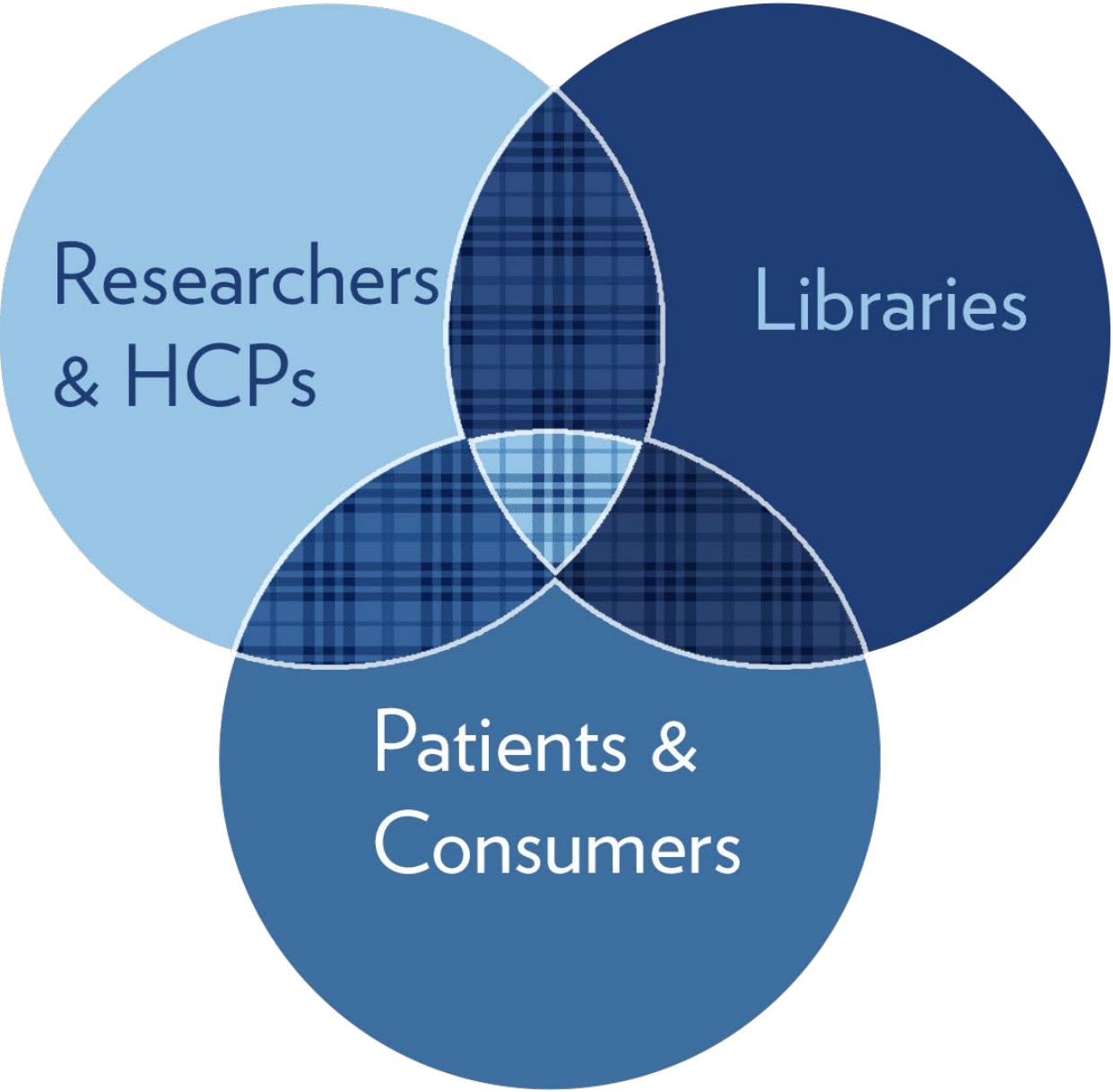


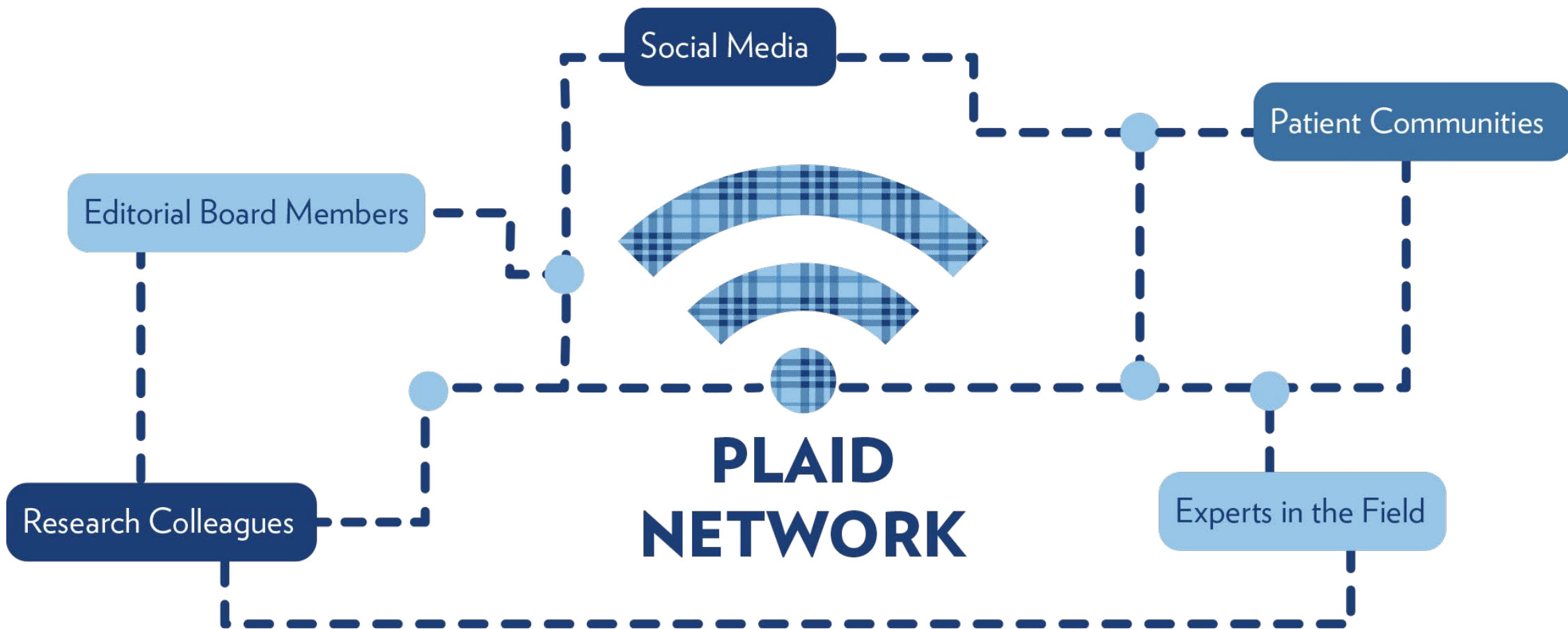
Dissemination of Information from Researchers to Patients via an Open Access Publishing Model





WHO  
BENEFITS  
FROM PLAID?







# Challenges



Indexing and discoverability



Impact factor



Peer review and editorial staff



Limited staff, limited time



New submissions and engagement



Platform (OJS)

# The PLAID Journal (OJS 2)

# Health, Culture and Society (OJS 2)

# Opportunities

## Article level metrics

- Social media promotion

## Publons

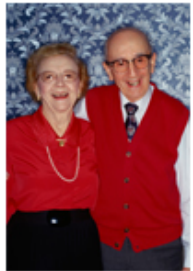
## Change in format – “mini issues”

- Spread out workload, increase publication frequency

## New partnership – JDRF

## Platform (OJS)

- Integration with ORCID and Publons
- Online only
- Video abstracts



## A Descriptive Epidemiology of Sexual Behavior and Interest in Older Adults with Diabetes

Alexandra C.H. Nowakowski, PhD, MPH, J. E. Sumerau, PhD


### Abstract



**Objective:** In this manuscript we conduct descriptive analysis of epidemiological patterns in older Americans' experiences with diabetes, comorbid chronic conditions, and sexuality. We use data from the National Social, Health, and Life Project (NSHAP) to explore variations in sexual and social experience among Americans with diabetes in later life.

**Research Design and Methods:** We use descriptive epidemiological methods to explore three research questions. First, how do sexual behavior and interest vary among older adults with and without diabetes? Second, do older adults with diabetes frequently cite health issues as a reason for abstaining from sexual activity? Third, what role might interrelated socio-demographic characteristics play in these patterns?

#### ABOUT THE AUTHORS

Alexandra C.H. Nowakowski, PhD, MPH   
Florida State University  
United States

Xan Nowakowski, PhD, is on the faculty at Florida State University in Medicine and Sociology, and proudly serves on the editorial board for PLAID. Xan lives with a chronic autoimmune disease of the mucous membranes that is similar to cystic fibrosis, as well as post-traumatic stress disorder. Their work focuses on the experience and management of chronic conditions, including advocacy for members of marginalized populations. Racial and ethnic inequality and the experiences of sexual and gender minorities are particular emphases in Xans research and outreach. Xan has a PhD and MS in Medical Sociology from FSU, an MPH in Health Systems and Policy from Rutgers University, and a BA in Political Science from Columbia University.

J. E. Sumerau, PhD  
University of Tampa  
United States

J Sumerau, PhD, is on the faculty at the University of Tampa, and previously taught at FSU while earning a PhD in Sociological Social Psychology. J lives with bipolar, depersonalization, and PTSD as well as chronic leg pain due to severe injuries. J also experiences this world as a bisexual, genderqueer agnostic, and in so doing, experiences many ways marginalized identities interact with chronic conditions throughout our daily lives. Jir work focuses on gender, sexuality, religion, and health, and a diverse array of social inequalities that intersect with these areas. Advocacy is likewise a major emphasis for J in all pursuits. In addition to holding a PhD and MS from FSU, J has a BS in Sociology from Augusta University, serves as the director of applied sociology at zir institution and regularly conducts evaluation research on the effectiveness of social programs for diverse communities.

SHARE THIS ARTICLE!



# PREOPERATIVE GLYCEMIC CONTROL FOR ADULT PATIENTS WITH DIABETES UNDERGOING ELECTIVE SURGERY

Erstan B. Weir, BS, Florida State University  
College of Medicine  
Deeb, MD, Florida State University  
College of Medicine

**ABSTRACT**  
As the prevalence of diabetes continues to increase in the United States, a higher proportion of elective surgical candidates will require specific preoperative education and guidelines to maximize patient outcomes and reduce the costs of care. The purpose of this article is to review the current literature to determine if preoperative glycemic control affects the lengths of hospital stay, postoperative complications, and mortality in people with type 1 and 2 diabetes. Additional recommendations for preoperative hypo- and hyperglycemia, the use of continuous glucose monitors, and the use of insulin and oral hypoglycemic agents are acknowledged and discussed.

# TRANSITIONING FROM PEDIATRIC TO ADULT DIABETES CARE

Nicole Johnson, DrPH, MPH, MA  
University of South Florida  
Stephanie T. Melton, PhD, MPH, MA  
University of South Florida  
Ashley N. Wingert, MPH, CPH  
University of South Florida

DOI:  
<http://dx.doi.org/10.17125/plaid.2016.66>

**ABSTRACT**  
*Objective:* The clinical transition from pediatric to adult diabetes care is often challenging for both young adults with type 1 diabetes (T1D) and the health care providers (HCPs) who care for this population. This study presents insights into the perceptions and needs of both patients with diabetes and HCPs during the clinical transition.  
*Research Design and Method:* Two separate surveys were administered with questions specifically tailored to each audience. Perceptions of the transition phase for both patients with T1D and HCPs were analyzed for general trends and then compared to investigate similarities and differences between patient and provider needs.  
*Results:* Both patients and HCPs expressed concerns regarding poor patient-provider communication during transition and the barriers to independently managing diabetes self-care responsibilities (e.g. navigating insurance, ordering supplies, arranging health-care appointments). Although 45% of HCPs reported screening transition age patients for mental health issues related to diabetes, only 9% of patients stated their provider offered this opportunity. Furthermore, patients reported facing a variety of challenges discussed with their HCP including: sexual issues (28%), depression or anxiety (17%), and eating disorders (11%).  
*Conclusions:* Training in the assessment of young adults and effective communication techniques may help HCPs in transitioning more effectively with young adults. Additional research and screenings for transition age patients and HCPs may help to discuss diabetes concerns and needs.



ADVOCATING  
**FOR YOUR**  
DIABETES NEEDS

By Melissa Lee and Marlin Wood  
DOI: <http://dx.doi.org/10.17125/plaid.2017.105>

# Patient Advocacy

# UNDERSTANDING SOCIAL SUPPORT PROGRAMS FOR INDIVIDUALS LIVING WITH TYPE 1 DIABETES: The Perspectives of Support Program Leaders

Patrick Brady, MS  
University of Iowa  
Hee-Jung Song, PhD  
University of Maryland-College Park  
Nadine R. Sahyoun, PhD  
University of Maryland-College Park  
Mira Mehta, PhD  
University of Maryland-College Park

DOI:  
<http://dx.doi.org/10.17125/plaid.2019.110>

**ABSTRACT**  
*Objective:* Limited research is available examining community-based social support programs (SSPs) for individuals with type 1 diabetes (T1D). The purpose of this study was to describe SSPs characteristics and the perceived benefits and barriers to attendance from the perspective of SSPs leaders.  
*Research Design and Method:* This study used a qualitative study design. In-depth interviews were conducted with SSP leaders (n = 9) in the Washington D.C. metro area. Individuals were recruited from community- and college-based programs. Using content analysis, interviews were analyzed for key themes.  
*Results:* The programs served different populations, which led to different group discussions. For example, college-based groups discussed alcohol use, while community-based groups discussed issues related to the management of their child's diabetes. Informational support, emotional support, and peer networking were described by SSP leaders as benefits of program attendance, whereas logistics, stigma, and avoidance of diabetes were described as barriers to program attendance.  
*Conclusions:* Exploring the characteristics of SSPs is essential to understanding their utilization and role in self-management and empowering individuals with T1D. SSPs offer many benefits, and SSP attendance should be encouraged.





# UNDERSTANDING SOCIAL SUPPORT PROGRAMS FOR INDIVIDUALS LIVING WITH TYPE 1 DIABETES:

The Perspectives of Support Program Leaders

Patrick Brady, MS  
University of Iowa

Hee-Jung Song, PhD  
University of Maryland-College Park

Nadine R. Sahyoun, PhD  
University of Maryland-College Park

Mira Mehta, PhD  
University of Maryland-College Park

## ABSTRACT

*Objective:* Limited research is available examining community-based social support programs (SSPs) for individuals with type 1 diabetes (T1D). The purpose of this study was to describe SSPs characteristics and the perceived benefits and barriers to attendance from the perspective of SSPs leaders.

*Research Design and Method:* This study used a qualitative study design. In-depth interviews were conducted with SSP leaders (n = 9) in the Washington D.C. metro area. Individuals were recruited from community- and college-based programs. Using content analysis, interviews were analyzed for key themes.



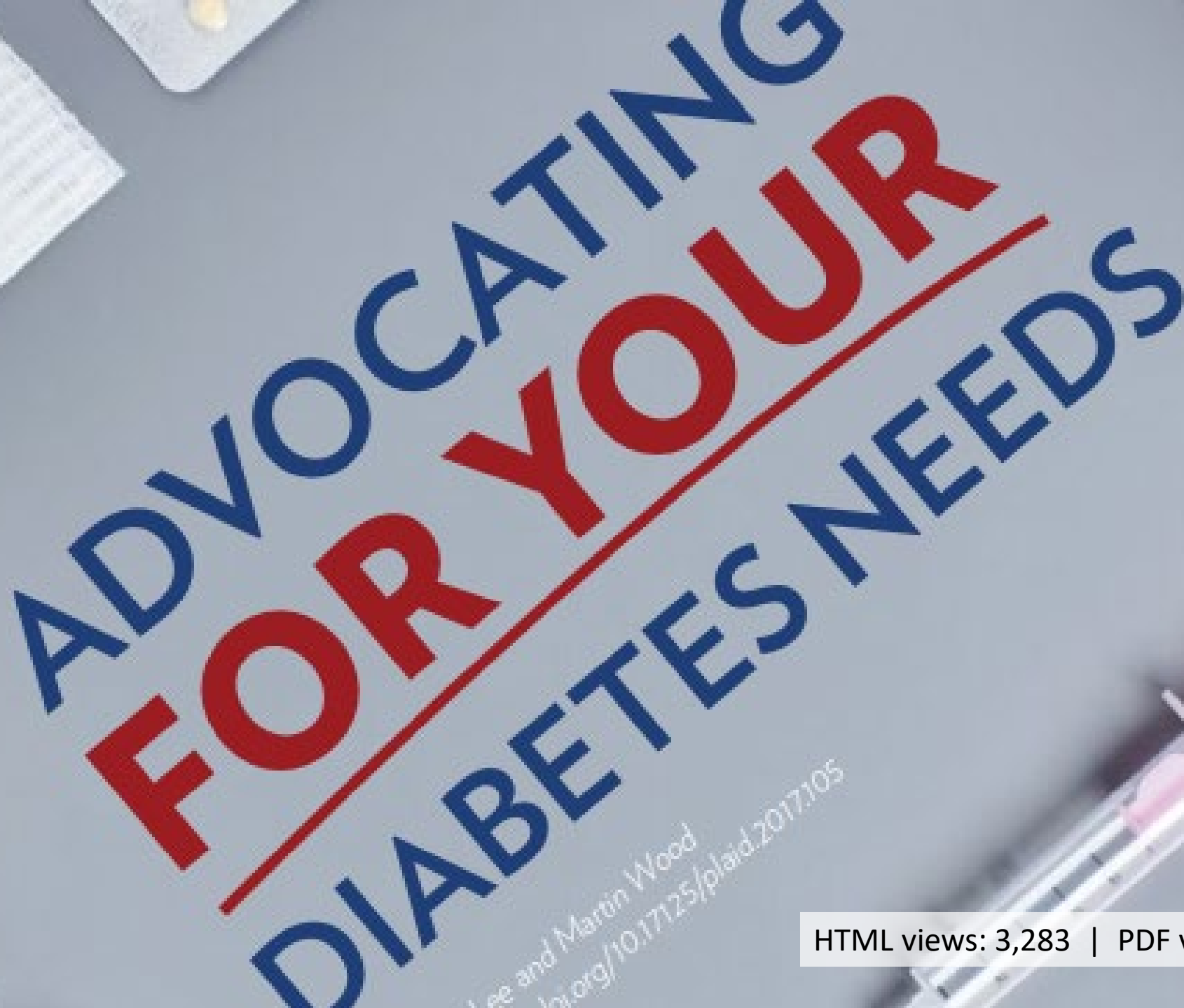
**CHANGING**

THE WAY WE TALK ABOUT

**DIABETES  
COMPLICATIONS**

By Chris Aldred AKA "The Grumpy Pumper" and Renza Scibilia



The background of the slide features a top-down view of medical supplies. In the upper right, there is a blister pack containing several orange, oval-shaped pills. In the lower right, a syringe with a pink plunger is visible. In the lower left, a small glass vial contains orange capsules. The main text is overlaid on a grey rectangular area in the center.

# ADVOCATING FOR YOUR DIABETES NEEDS

Lee and Martin Wood  
[doi.org/10.17125/plaid.2017.105](http://doi.org/10.17125/plaid.2017.105)

HTML views: 3,283 | PDF views: 154 | Altmetric: 4

# TRANSITIONING FROM PEDIATRIC TO ADULT DIABETES CARE

Nicole Johnson, DrPH, MPH, MA  
University of South Florida

Stephanie T. Melton, PhD, MPH, MA  
University of South Florida

Ashley N. Wingert, MPH, CPH  
University of South Florida

DOI:

## ABSTRACT

*Objective:* The clinical transition from pediatric to adult diabetes care is often challenging for both young adults with type 1 diabetes (T1D) and the health care providers (HCPs) who care for this population. This study presents insights into the perceptions and needs of both patients with diabetes and HCPs during the clinical transition.

*Research Design and Method:* Two separate surveys were administered with questions specifically tailored to each audience. Perceptions of the transition phase for both patients with T1D and HCPs were analyzed for general trends and then compared to investigate similarities and differences between patient and provider needs.

# PREOPERATIVE GLYCEMIC CONTROL FOR ADULT PATIENTS WITH DIABETES UNDERGOING ELECTIVE SURGERY

Tristan B. Weir, BS, Florida State University

College of Medicine

Larry C. Deeb, MD, Florida State University

College of Medicine

DOI:

<http://dx.doi.org/10.17125/olaid.2016.62>

## ABSTRACT

As the prevalence of diabetes continues to increase in the United States, a higher proportion of elective surgical candidates will require specific preoperative education and guidelines to maximize patient outcomes and reduce the costs of care. The purpose of this article is to review the current literature to determine how preoperative glycemic control affects the lengths of hospital stays, postoperative complications, and mortality in people living with type 1 and 2 diabetes. Additional recommendations are provided for preoperative hypo- and hyperglycemia, the use of insulin pumps or continuous glucose monitors, and day-of-surgery management of insulin and oral hypoglycemic agents. Gaps in medical evidence



# FSU Open Access Initiatives



Hosted OA Journals



Open Educational Resources



Open Access Textbooks



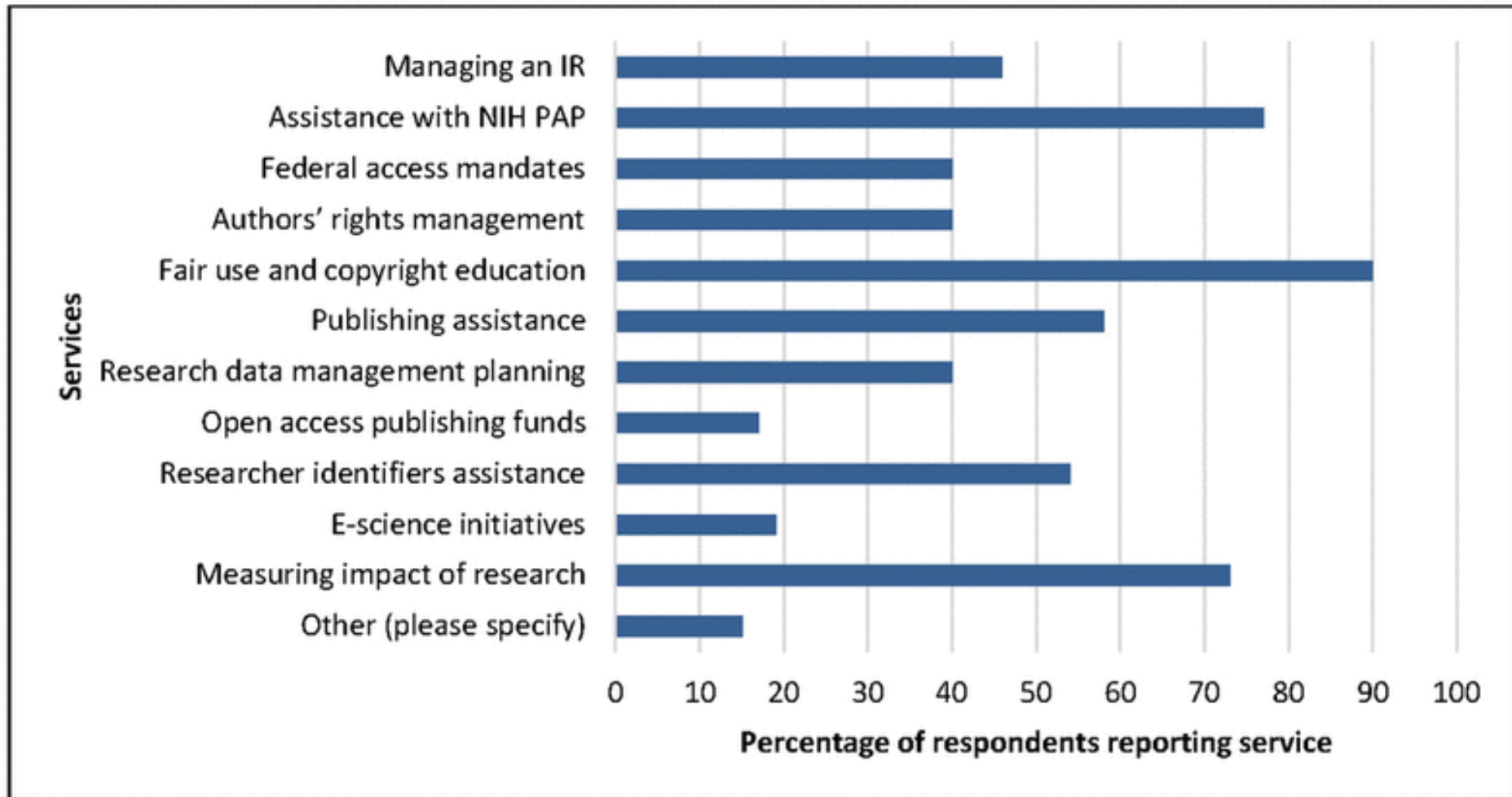
Open Access Fund



Institutional Repository



Open Access Policy



## AAHSL Members' Reported Scholarly Communications Services

Source: Mears K, Bandy SL. Investigating the need for scholarly communications positions in Association of Academic Health Sciences Libraries member institutions. *JMLA*. 2016; 105(2): 145-9.

Thank you for  
allowing us to  
share with you!

**Martin Wood, MSLIS, AHIP**

Director, Maguire Medical Library

[martin.wood@med.fsu.edu](mailto:martin.wood@med.fsu.edu)

**Roxann Mouratidis, MSLIS, AHIP**

Head of Scholarly Communications

[roxann.mouratidis@med.fsu.edu](mailto:roxann.mouratidis@med.fsu.edu)

**Mark Bauer**

Design Editor, The PLAID Journal

[mark.bauer@med.fsu.edu](mailto:mark.bauer@med.fsu.edu)

[med.fsu.edu/library](http://med.fsu.edu/library)

[theplaidjournal.com](http://theplaidjournal.com)